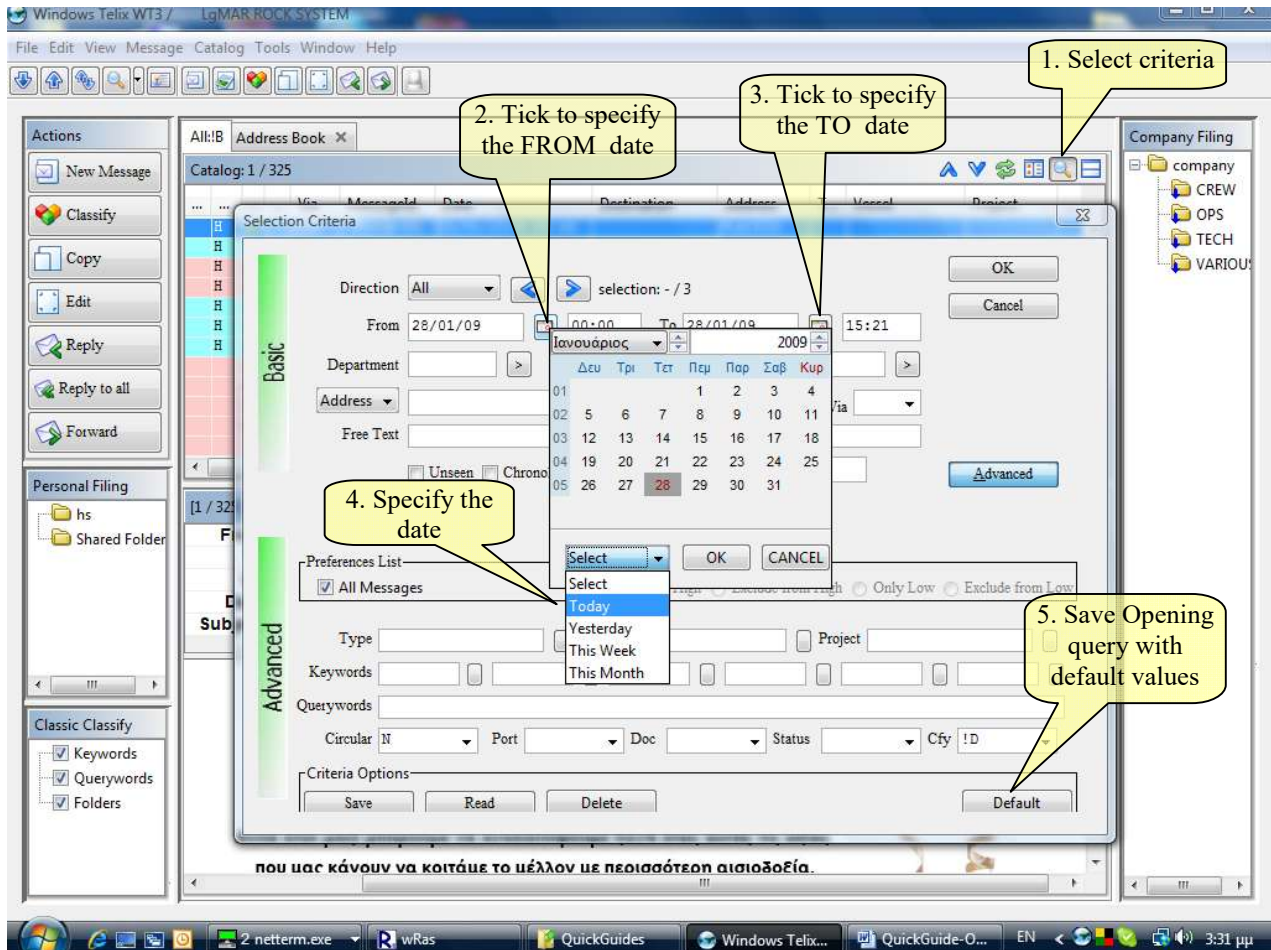


How to create/change WT3 opening query

Opening query is the default message selection applying at the application startup. The query output (messages) is shown in the Main catalog (first tab). Use the following steps to change the default application opening query.



Explanation:

1.	Evoke query criteria menu (at the current tab) in order to create a new default query.
2./3.	Click to specify the FROM and/or TO dates.
4.	Specify the date for both FROM date and TO date.
5.	Save the default opening query.